

# Add-on/Spare Disk Drive Instructions

This document describes how to either add a new disk drive or remove and replace an existing disk drive in a SnapServer XSD 40 Desktop Storage Appliance from Overland Storage.

**WARNING:** To reduce the risk of electric shock or damage to equipment, always remove any power cords while working with the unit.

**WARNUNG:** Um das Risiko eines elektrischen Schlags oder Schäden am Gerät zu vermeiden, ziehen Sie stets den Netzstecker, bevor Sie an der Einheit arbeiten.

**AVERTISSEMENT:** Pour réduire le risque de choc électrique ou endommagement de l'équipement, retirez toujours les cordons électriques en travaillant avec l'appareil.

**CAUTION:** While working with the unit, observe standard Electrostatic Discharge (ESD) precautions to prevent damage to micro-circuitry or static-sensitive devices.



## Register the Add-on Drives

When **adding** an additional drive to your server, you must first register it to activate the warranty. Technical and warranty support are **not available** until this is done:

1. Go to the **Overland Storage** website  
<http://www.overlandstorage.com/>
2. Select **Service & Support > My Products**.
3. At the [Site Login](#), enter your **e-mail address** and **password**, and click **GO**.
4. Click the **Manage Products** button.
5. From the Product Selector drop-down list, select the **XSD 40** in which you are installing the extra drive.
6. Click **Add a Component**.
7. Enter the drive **information**.
8. Click **Save & Exit**.

**IMPORTANT:** Your warranty certificate will be emailed to you. Follow the instructions included in the email to complete the registration process.



## Swap/Install Drives

### Remove the Drives

Drives being replaced must be removed. Retain the drive to return it to Overland Storage, Inc.

**NOTE:** Do not remove the disk drives from their carriers. Doing so voids the drive warranty.

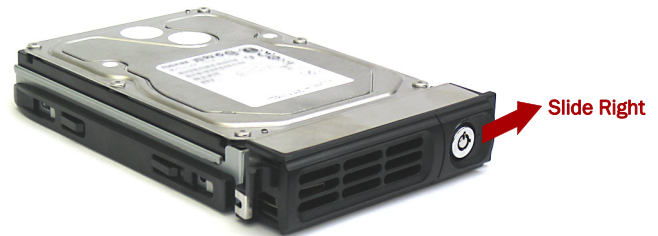
1. Slide the **release button** on the carrier to the right.  
The latch on the front of the carrier will release and the handle will extend.
2. Set the **assembly** on a secure surface.
3. Repeat [Steps 1–2](#) for each remaining carrier.



### Prepare New Drives

The handle mechanism must be unlatched to install the new drive carriers in the XSD 40.

1. Slide the **release button** on the carrier to the right.  
The latch on the front of the carrier will release and the handle will extend.
2. Set the **assembly** on a secure surface.
3. Repeat [Steps 1–2](#) for each remaining new drive carrier.




### Install New Drives

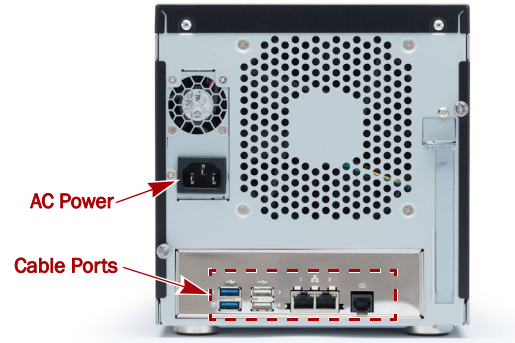
1. With the door open, position a **new drive assembly** in front of the topmost empty bay.
2. Slide the **assembly** into the bay until it stops.
3. Swing the **handle** closed until it clicks, locking the drive into place.
4. Repeat [Steps 1–3](#) for **any** other drives or blank drive carriers being installed.
5. Close the **door**.



## Attach Cables and Power Cord

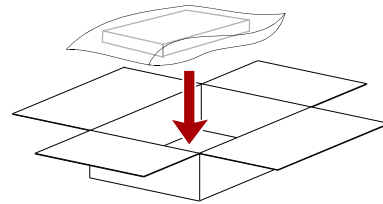
1. Reattach **all the cables** (except the power cord) to the same connections previously used.
2. Attach the **power cord**.
3. At the front, press the **power button** to power it ON.

 **IMPORTANT:** If this is a **new appliance install**, continue with the *SnapServer XSD 40 Quick Start Guide* instructions.



## Return Old Parts to Overland

1. Place the **old part** in the anti-static bag and put it in the replacement part's box.
2. Use an RMA to return the part to **Overland Storage**.  
For return shipping details and RMA number, go to:  
<http://docs.overlandstorage.com/return-instructions>



## Activate New Drives

For details on activating any new drives in a XSD 40, refer to the *SnapServer Administrator's Guide For GuardianOS 7* on replacing disk drives in the ***Disks and Units*** section.

That section covers both DynamicRAID and Traditional RAID configurations.

